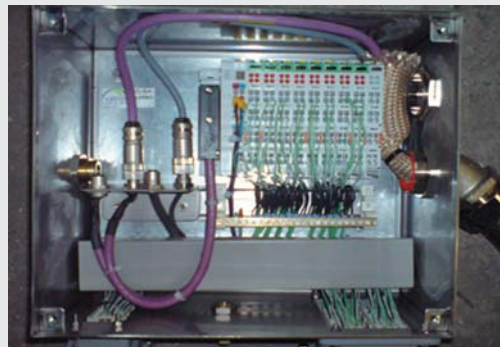


THERMOJACKET S



Braided sleeving from E-glass, with an acrylic saturant coating

The braided glass fibre sleeving is coated with an acrylic saturant coating, which adds rigidity and abrasive strength to the product and reduces the likelihood of endfray. Thanks to this rigidity the Thermo Jacket S is easy to apply over long lengths of hose or cable and the large braid angle allows for significant expansion of the sleeve if necessary (for instance with in-line couplings or bigger cable-splices). The material resists most acids and alkalis; is unaffected by most bleaches and solvents. In the field of cable protection, a complete program of Thermo Jacket fittings is available for easy installation. Thermo Jacket S does not withstand molten splash like Hipo Jacket does, but offers good heat protection at higher continuous temperatures than are possible for Hipo Jacket. Applications include thermal insulation and protecting of cables and hoses in the glass, ceramics and steel industry as well as in the apparatus- and machine-building industry.



Material & Construction:

Construction: Braided E-glass sleeving, with acrylic saturant coating; high continuous temperature, halogen-free, good thermal insulation, abrasion resistant, no end-fray, easy installation for long lengths.

Temperature: -55 °C till +538 °C continuous.

Colour: Gold.

Thermo Jacket S			Diameter		Standard carton		Small carton		Reels		Weight (Kg/m)
Size (mm)	Size (Inch)	Type	Inside (mm)	Outside (mm)	Metre	Article No.	Metre	Article No.	Metre	Article No.	
						Gold	Gold		Gold		
4	1/4"	TJ-04	5 - 10	7 - 12	30	336.604.3	15	336.604.1	180	336.604.8	0,02
6	3/8"	TJ-06	8 - 15	10 - 17	30	336.606.3	15	336.606.1	120	336.606.8	0,04
10	5/8"	TJ-10	12 - 30	14 - 32	30	336.610.3	15	336.610.1	75	336.610.8	0,08
14	7/8"	TJ-14	20 - 50	22 - 52	30	336.614.3	15	336.614.1	60	336.614.8	0,15
22	1.3/8"	TJ-22	30 - 65	32 - 67	30	336.622.3	15	336.622.1	45	336.622.8	0,20
44	2.3/4"	TJ-44	50 - 125	52 - 127	30	336.644.3	15	336.644.1	-	-	0,30

Special remarks:

Thermo Jacket S is a woven sleeve and for this reason very flexible. Due to its flexibility it can be expanded, so different sizes can be covered with one and the same type of Thermo Jacket S.

Please notice that when the sleeve is expanded, more meters are necessary to cover the same length, as indicated in the table below.

TJ-04 on 6 mm core:	1,00 metre TJ is needed to cover 1,00 metre core.
TJ-06 on 10 mm core:	1,00 metre TJ is needed to cover 1,00 metre core.
TJ-06 on 13 mm core:	1,25 metre TJ is needed to cover 1,00 metre core.
TJ-10 on 16 mm core:	1,00 metre TJ is needed to cover 1,00 metre core.
TJ-10 on 19 mm core:	1,15 metre TJ is needed to cover 1,00 metre core.
TJ-14 on 25 mm core:	1,02 metre TJ is needed to cover 1,00 metre core.
TJ-14 on 32 mm core:	1,08 metre TJ is needed to cover 1,00 metre core.
TJ-22 on 38 mm core:	1,06 metre TJ is needed to cover 1,00 metre core.
TJ-22 on 52 mm core:	1,17 metre TJ is needed to cover 1,00 metre core.
TJ-44 on 76 mm core:	1,16 metre TJ is needed to cover 1,00 metre core.
TJ-44 on 102 mm core:	1,51 metre TJ is needed to cover 1,00 metre core.

The fittings for Thermo Jacket S are outlined on page 10-17.



FITTINGS FOR THERMOJACKET IP 67



Anaconda nickel plated brass fittings for Anamet Thermo jacket S

To fit the Thermo jacket S you can use the standard Anaconda fittings (which are being used for Sealtite), if you replace their standard polyamide clamping rings with the special metal clamping rings mentioned here under. The fittings are also available in 45° - 90° and in stainless steel (see also chapter 5).

Material & Construction:

Construction: Nickel plated brass fitting, consisting of 4 parts (counter nut, clamping ring, ferrule and body).



Material: Counter nut, body, clamping ring and ferrule are nickel plated brass with exception of size 3/8" till 1" where the ferrule is from galvanised steel. Inserts are made from PA6 (red for ISO metric, blue for Pg and white for NPT).

Temperature: -45 °C till +105 °C continuous (cable-hose-fittings till +300 °C on request).

Protection class: IP 40.

Colour: Metal.

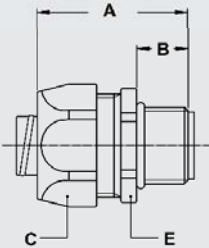
Clamping ring, nickel plated brass, for combination with Thermo jacket S.



Thermo jacket type		Fitting thread size			Standard Package	Article Number	Weight (Kg/100)	
Size (mm)	Type	ISO	Pg	NPT				
6	TJ-06	-	M16 x 1,5	Pg 11	1/2" NPT	50	817.612.0*	0,6
10	TJ-10	-	M20 x 1,5	Pg 16	1/2" NPT	50	817.616.0	0,6
10	TJ-10	-	M25 x 1,5	Pg 21	3/4" NPT	25	817.620.0	1,0
14	TJ-14	-	M32 x 1,5	Pg 29	1" NPT	10	817.626.0	1,2
14	TJ-14	-	M40 x 1,5	Pg 36	1.1/4" NPT	5	817.635.0*	2,0
22	TJ-22	-	M50 x 1,5	Pg 42	1.1/2" NPT	5	817.640.0*	4,2
22	TJ-22	-	M63 x 1,5	Pg 48	2" NPT	4	817.650.0*	9,0

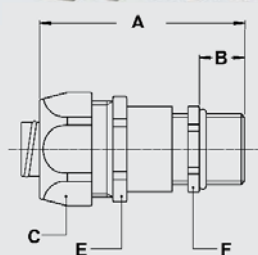
* Please note that for the marked sizes a double layer of teflon tape or Hipsosiltape is recommended around the ferrule. This to guarantee the right pull-out strength.

ISO straight fitting, male, nickel plated brass (without clamping ring).



Thread	Thermo jacket type	Dimensions in mm						Standard Package	Article Number	Weight (Kg/100)
ISO	Type	Int. Diam.	A	B	C	D	E			
M16 x 1,5	TJ-06	10,2	35	12	26	-	24	50	812.016.1	4,7
M20 x 1,5	TJ-10	13,9	37	13	29	-	27	50	812.020.1	5,1
M25 x 1,5	TJ-10	18,5	40	15	35	-	33	25	812.025.1	11,7
M32 x 1,5	TJ-14	23,8	46	15	45	-	43	10	812.032.1	19,7
M40 x 1,5	TJ-14	31,8	52	16	54	-	52	5	812.040.1	35,0
M50 x 1,5	TJ-22	36,8	56	18	63	-	60	5	812.050.1	42,2
M63 x 1,5	TJ-22	47,8	66	20	77	-	74	4	812.063.1	52,8

ISO cable-hose fitting, with extended clamping range, male, nickel plated brass.



Thread	Thermo jacket type	Clamping range (mm)	Dimensions in mm					Standard Package	Article Number	Weight (Kg/100)
ISO	Type		A	B	C	E	F			
M16 x 1,5	TJ-06	3 - 10,2	64	12	26	24	20	10	812.716.2	8,2
M20 x 1,5	TJ-10	7 - 13,9	64	12	29	27	24	10	812.720.2	10,2
M25 x 1,5	TJ-10	9 - 18,0	77	15	35	33	30	5	812.725.2	17,0
M32 x 1,5	TJ-14	13 - 23,8	88	15	45	43	40	5	812.732.2	31,0
M40 x 1,5	TJ-14	20 - 31,8	102	15	54	52	50	2	812.740.2	54,6
M50 x 1,5	TJ-22	21 - 36,8	106	18	63	60	58	2	812.750.2	76,6
M63 x 1,5	TJ-22	27 - 44,0	116	18	77	74	68	2	812.763.2	116,6